

ORACLE HYPERION PLANNING

KEY FEATURES AND BENEFITS

KEY FEATURES:

- Multi-dimensional / multi user planning with a powerful business rules engine
- Flexible workflow and plan management capabilities
- Comprehensive Microsoft Office integration
- Easy to use Web interface
- Seamless creation of reports and dashboards
- Proven and scalable architecture
- Robust integration with ERP systems and other sources
- Full set of administrative tools for application management

KEY BENEFITS:

- Reduce budgeting and planning cycles by weeks or months
- Improve forecast accuracy
- Appeal to a wider user community through an intuitive Web user interface
- Shrink the learning curve for users by leveraging Microsoft Office products as an interface into Oracle Hyperion Planning
- Eliminate time lag between when plans are updated and reports are refreshed
- Reduce cost of ownership through superior application deployment, management tools and packaged data integration
- Lay the foundation for making the transition to Enterprise Business Planning

Oracle Hyperion Planning is a flexible Web and Microsoft Office based planning application that supports enterprise wide planning, budgeting, and forecasting. Oracle Hyperion Planning provides a rich planning and modeling framework that supports driver based planning to help connect operational assumptions to financial outcomes. It supports a hierarchical planning process that encompassing both corporate finance and the lines of business within an enterprise. With Oracle Hyperion Planning, you can meet your immediate financial planning, budgeting and forecasting needs while enabling a platform for future cross-functional expansion and automated process integration.

Streamline the Enterprise wide Planning and Budgeting process

The planning and budgeting process is a resource and time intensive one in most organizations. The process tends to be dominated by manual tasks typically involving several hundreds of spreadsheets being exchanged across cost center managers, line of business finance managers and corporate finance personnel. Changes to business assumptions and strategies mid way through the process cause extensive rework and often result in spreadsheet errors that sometimes go undetected until after the budget has been finalized.

Oracle Hyperion Planning enables a planning environment that streamlines the planning process in an enterprise by aligning plans created across the enterprise along common dimensions such as cost centers, business entities and chart of accounts. Cost center plans can be linked to line of business plans which in turn can be linked to a corporate level plan. The impact of changes to key plan assumptions can be evaluated instantaneously and the revised plan can be made immediately available to all stakeholders without a time lag or risk of manual error. Oracle Hyperion Planning provides a powerful calculation and business rules engine that can be used to express a range of business logic from simple arithmetic formulae to complex procedural multi dimensional allocation rules. Oracle Hyperion Planning provides a simple web interface along with a guided task flow for planners to create their plans and supports both bottoms up and top down planning processes. It provides tools for budget administrators to monitor the progress of various participants towards submitting their plans and also provides workflow and plan management capabilities to support the plan review and approval process.

Improve Forecast Accuracy with Integrated Analytical Capabilities

Companies today are faced with a rapidly changing business environment. Demand for goods and services is very volatile, impacted by changing consumer and

customer behavior. Input costs fluctuate and the supplier landscape is constantly changing. These external factors also require that the company have the right capacity and skill sets within its workforce and the appropriate investments in capital and technology to stay competitive in this market. A key requirement to stay ahead of the competition is to understand and quantify variability arising from all of the above and forecast financial and operational performance accurately.

Oracle Hyperion Planning and the included business intelligence tools enable a sophisticated forecasting process that is driven by an analysis of the root causes of variance between plans and actual in the prior fiscal periods. This analysis leads to identification of key areas for course correction. Oracle Hyperion Planning provides unlimited scenario analysis for planners to assess the impact of various combinations of business assumptions on key financial outcomes and commit to one of these scenarios as the go forward forecast. Oracle Hyperion Planning can also be used to implement a rolling forecast process in which the forecasting time horizon rolls forwards with the passage of time.

Connect a Wide User Community with an intuitive Web Interface

Oracle Hyperion Planning enables your business users to easily view plans and reports on the web and does not require users to have specialized computer skills. A standard web form in Hyperion Planning allows a user to interact with plan, budget, forecast and/or actuals data in the context of a set of page filters and a Microsoft Excel like grid of rows and columns. The application provides a useful menu of tools to manipulate and adjust the plan data in the form either directly in a cell, through changing related data such as drivers or driver types or through performing allocations and spreads across multiple cells within a data grid. It also guides your less-frequent users step by step through the planning process using a wizard called Task List, allowing you to reduce cycle times while ensuring that your plans are complete and reliable. For more sophisticated users Oracle Hyperion Planning supports ad hoc analysis of the data in the web form through supporting alternate configurations of page, row and column dimensions

The screenshot displays the Oracle Hyperion Planning web interface. The main window shows a 'Revenue Plan' grid with columns for months (Jan to Jul) and rows for product categories. Below the grid is a 'Revenue Targets' summary table.

	Jan	Feb	Mar	Apr	May	Jun	Jul
Bookshelf Audio System	6.10%	5.02%	3.17%	3.81%	5.08%	6.32%	5.81%
Home Theater Audio System	8.21%	6.76%	4.27%	5.13%	6.85%	8.51%	7.83%
Home Audio	14.30%	11.79%	7.43%	8.94%	11.93%	14.83%	13.65%

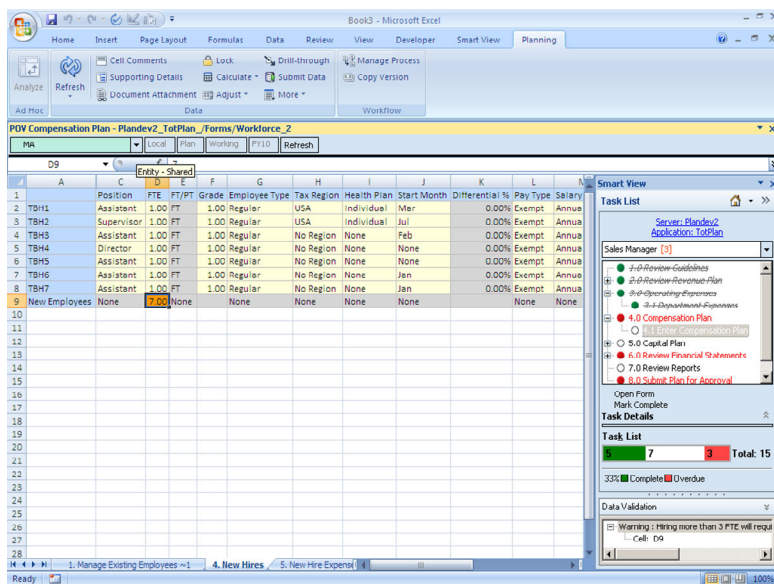
	Initial	Target	Variance	Variance (%)
Operating Revenue	290,015,800	288,003,628	-1,812,172	-0.62%

The intuitive Web interface of Oracle Hyperion Planning allows financial and business users to quickly update key business drivers and see their related impact on financials.

Leverage Existing User Competencies with Microsoft Office Integration

Oracle Hyperion Planning offers comprehensive integration with Microsoft Office tools such as Microsoft Outlook, Excel, Word and PowerPoint. Users can access their planning tasks and due dates within Microsoft Outlook Task List and Calendar as well as within Microsoft Excel. Users can also view planning data forms from within Microsoft Excel with the same functionality as the web based interface. For example they have access to the same set of menu items and toolbars on the Web and in Microsoft Excel. They can also perform drill ups and drill downs on rows and columns in an identical manner in both interfaces. Both interfaces also support ad hoc analysis of data where rows, column and page dimensions can be pivoted differently to create different views of the same data. Common planning actions such as spreading and allocation are available as context sensitive right click menus on planning data forms rendered within Microsoft Excel. Oracle Hyperion Planning lets you take your plans offline, and at your own convenience, change assumptions, perform calculations, analyze results, and connect back to the central database to synchronize your updates.

Additionally, you can directly integrate data from Oracle Hyperion Planning into Microsoft PowerPoint and Microsoft Word. This allows you to quickly create highly customized reports with accurate information and automatically refresh the report when the underlying data changes. The end result: reduced manual intervention, improved data integrity, and increased reporting accuracy.



The built-in Microsoft Office integration in Oracle Hyperion Planning allows users to update and report plans in Microsoft Excel, PowerPoint, and Word.

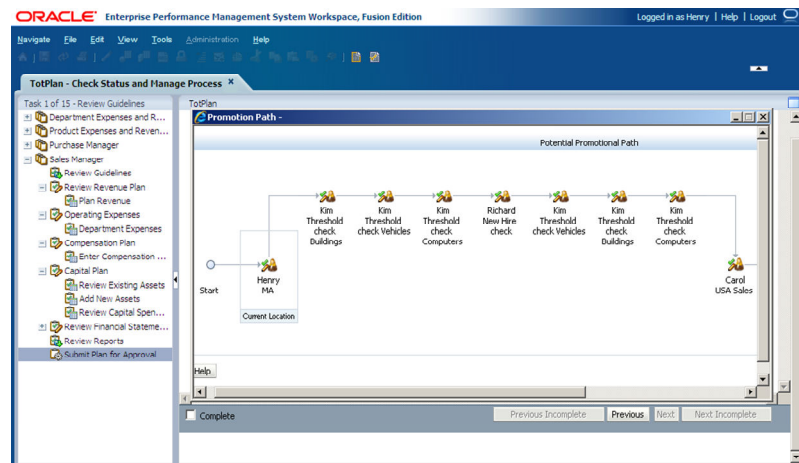
Integrate Planning and Management Reporting seamlessly

Oracle provides native business intelligence and planning capabilities in a single environment. Reports and dashboards that display plan and actual data can be created in minutes and any change made to the plans in Oracle Hyperion Planning

can be instantaneously reflected in the content of the reports and dashboards. Using a web interface called the Oracle Enterprise Performance Management Workspace, you can access user-friendly dashboards, interactive analytics, and richly formatted financial reports while interacting with the planning system.

Ease Collaboration and Maintain Control with Powerful Plan Management and Workflow

Oracle Hyperion Planning's powerful plan management and workflow functionality — including e-mail notifications, alerts, and task lists — empowers users to track and communicate the progress of plans and budgets. Ownership of plans can be designated based on a specified intersection of key plan dimensions. For example Bob could own the plan for all the salary expense accounts for the Eastern Region while Sue could own the plan for all the capital expense accounts for the Western Region. The approval path can be specified for each slice of the plan. When a planner “promotes” a plan for approval the system can automatically identify the next approver. Plan promotion paths can be made conditional on meeting certain criteria. For example if the expenditure on building improvements is budgeted to be less than 5% of the overall expense budget, the system could require that a facilities manager approve this plan prior to further progressing it along the approval chain. All of the above processes can also be performed in conjunction with what-if analysis and scenario testing that allows users to compare and contrast multiple scenarios prior to promoting the selected scenario for approval up the management chain.



Flexible and powerful planning process management and workflow capability allows the implementation of sophisticated review and approval processes

Support Large Deployment with Scalable Architecture at low cost of ownership

Oracle Hyperion Planning is built on a scalable architecture, which allows you to, if appropriate, start with an initially small deployment before rolling it out to hundreds or thousands of users in the organization. The architecture allows for flexible data entry, analysis, and frequent real-time updates from anywhere, in a safe and secure

RELATED PRODUCTS**ORACLE'S
PERFORMANCE
MANAGEMENT
APPLICATIONS**

Oracle's performance management applications comprise a modular suite of integrated applications that support a broad range of strategic and financial performance management processes to enable management excellence. Part of Oracle's enterprise performance management system, these applications can be quickly deployed out of the box, extended with Oracle's business intelligence product family, or tailored to meet your organization's specific needs.

RELATED PRODUCTS:

Oracle's performance management applications include the following products:

- Strategy Management Solutions
- Financial Close and Reporting Solutions
- Enterprise Business Planning Solutions
- Oracle Hyperion Capital Asset Planning
- Oracle Hyperion Workforce Planning
- Oracle Integrated Operational Planning
- Oracle Integrated Margin Planning
- Oracle Hyperion Public Sector Planning and Budgeting
- Oracle Crystal Ball Profitability and Cost Management Solutions
- Enterprise Dimension Management Solutions

environment using a standard Web browser.

Moreover, Oracle Hyperion Planning provides collaborative planning processes and dependable, centralized application security and data management, significantly reducing your maintenance and distribution costs. Oracle Hyperion Planning interoperates with existing security mechanisms to help ensure maintenance and security consistency.

Ensure Data Quality with Robust Data Integration

Oracle Hyperion Planning facilitates bidirectional data integration with ERP systems, legacy applications, data warehouses, and other enterprise data sources. It is an open and extensible system that leverages data that was previously "locked" in silos and other systems.

Lay the Foundation for Enterprise Business Planning

Oracle Hyperion Planning is the center piece of Oracle's broader solution for Enterprise Business Planning. The Enterprise Business Planning process spans strategic planning and financial modeling, financial planning, budgeting and forecasting, workforce planning, capital asset planning, revenue and margin planning and other elements of operational planning that have a significant impact on the enterprise financial performance. It also involves an ongoing evaluation of business costs and profitability along key dimensions such as product and customer segments and using those insights to constantly drive change in business plans. In addition, a robust Enterprise Business Planning process leverages predictive analysis and simulation techniques to constantly evaluate and quantify risk and uncertainty, inherent to all of these plans, and takes actions to mitigate those risks as appropriate.

Contact Us

For more information about how your organization can leverage the power of Oracle Hyperion Planning, please visit oracle.com or call +1.800.ORACLE1 to speak to an Oracle representative.

Copyright March 2010 Oracle. All Rights Reserved.

This document is provided for information purposes only, and the contents hereof are subject to change without notice. This document is not warranted to be error-free, nor is it subject to any other warranties or conditions, whether expressed orally or implied in law, including implied warranties and conditions of merchantability or fitness for a particular purpose. We specifically disclaim any liability with respect to this document, and no contractual obligations are formed either directly or indirectly by this document. This document may not be reproduced or transmitted in any form or by any means, electronic or mechanical, for any purpose, without our prior written permission.

Oracle is a registered trademark of Oracle Corporation and/or its affiliates. Other names may be trademarks of their respective owners.